

KAllink-BIT

The driver for KAlphys, 1066, ..

„ The optimum way to connect to the KNX.“

KAllink-BIT is the driver designed for the hardware solution KAlphys. It represents the link layer and upper part of the physical layer in the OSI model.

This pair, KAllink-BIT and KAlphys, represents an ideal solution for connecting to the KNX TP medium.

KAllink-BIT is written in standard C and assembler for performance improvement. Its clear structure makes it transparent for any usage.

KAllink-BIT has a great advantage over solutions where link layer and upper physical layer are in a separate chip outside the application's controller. With KAllink-BIT 100% bus load can be achieved, which is important for devices like router, gateways and similar. KAllink-BIT also allows generating very long frames. Even generation of intentionally faulty frames is possible for system tests.

Our propulsive product KAllink-BIT with appropriate hardware solutions (e.g. KAlphys) makes features like more energy from the bus or low cost KNX devices possible.

KAllink-BIT offers maximum performance with high flexibility.

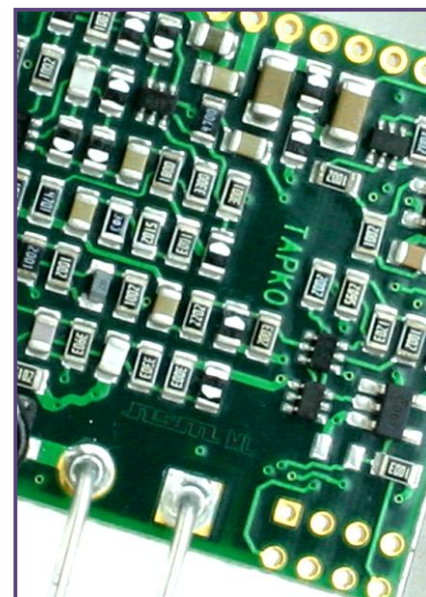
KAllink-BIT is KNX certified.



The optimum connection

Advantages

- Cost effective KNX solutions
- Short and long frames supported
- Small footprint
- 100% bandwidth utilization for sending
- High flexibility
- Adaptable to your requirements
- KNX certified



Features

General

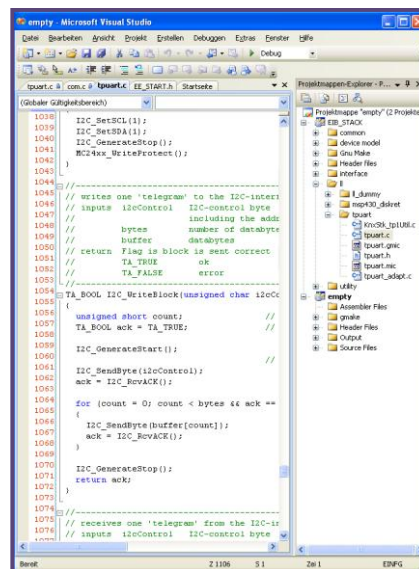
- Structure according to ISO/OSI-model
- Standard ANSI-C and assembler
- Long frames up to 245 bytes
- Supports bus monitor mode / raw frames
- Message sending rate up to 100% bandwidth (important for coupler)
- Runs on MSP430
- Development board available
- KNX certified

Supported physical layers

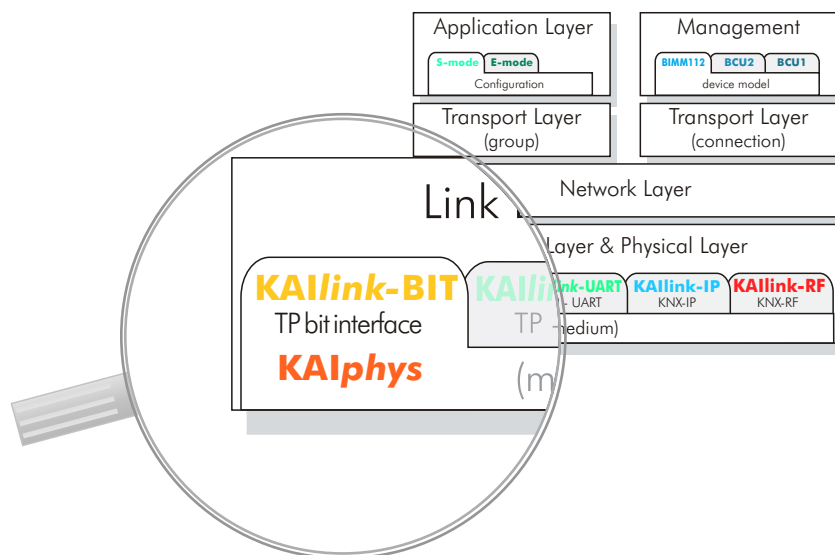
- **KAlphys**
- FZE1065 / FZE1066
- TPUART in analogue mode
- Devices where bit generation and bit checking is performed by the CPU

Resources

- ROM/Flash ~2k
- RAM short frames ~40 bytes
- RAM long frames ~260 bytes



Architecture



KAlink-BIT is the driver software for the TP physical layer solution KAlphys. It is a component of KAI (KNX Advanced Interface) for KNX enabled bus devices.

009.001 E

The data contained herein are subject of change without notice.



Yorckstrasse 22, 93049 Regensburg

+49 941 307470 +49 941 30747 29

@info@tapko.de

www.tapko.de